

# **P-BE** **stainless steel housing** **for aeration of storage tanks**



## **ultra.air P-BE**

■ P-BE filter are used to ensure 100 % sterility in the storage of pharmaceutical products, chemicals, food or of fermenters.

■ The two-part housing is user-friendly designed and has a splash protection to prevent liquids coming in contact with the filter media.

## **Features and advantages**

- 12 different sizes for operating volumes from 3 to 1980 Nm<sup>3</sup>/h related to 1 bar.
- Complies to the requirements of the European directive 97/23/EG for pressure vessels.
- Different element sizes can be used due to the modular design. Apart from sterile filters, polypropylene or Teflon\* membrane filters can be used.

## **Applications**

- Chemical Industry
- Pharmaceutical Industry
- Biotechnology
- Cosmetics Industry
- Breweries
- Dairies
- food and beverages
- Water treatment systems
- Fermentation processes

# P-BE stainless steel housing

## Materials:

Filter housing	stainless steel 1.4301 (304), optional 1.4571 (316L)
----------------	--

## Surface finish:

Polished on the inside and on the outside.

## Connection types

Milkpipe DIN 11851	standard for 0006 – 0192
DIN or ANSI flange	standard, starting from 0432 housing

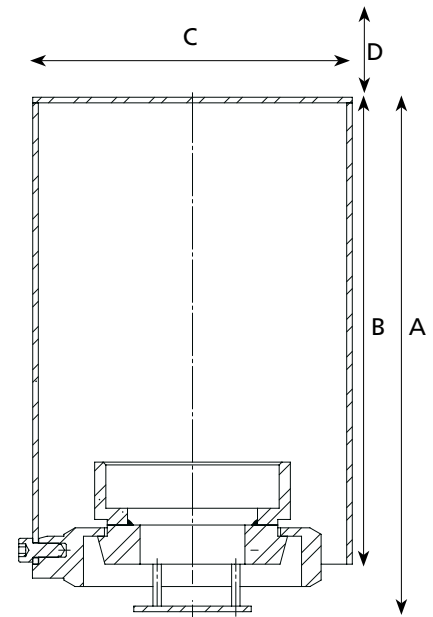
Clamp connection or other connections and bigger housings on request

## Maximum operating pressure:

0006 – 0192	16 bar
0288	12 bar
0432 – 1920	10 bar

## Maximum operating temperature:

200 °C



Type P-BE	Volume flow in m <sup>3</sup> /h at		connect.	P-BE filter element		dimensions in mm				weight in kg
	$\Delta p$ 20 mbar	$\Delta p$ 40 mbar		size	qty.	A	B	C	D	
0006	4,5	9	DN 32	03/10	1	110	9	85	100	1,5
0027	12	24	DN 40	05/25	1	168	9	104	155	2,2
0032	17	35	DN 50	05/30	1	186	9	114,3	155	2,4
0072	35	70	DN 50	10/30	1	312	9	114,3	280	3,3
0144	70	140	DN 80	20/30	1	550	8	154	580	9,2
0192	105	210	DN 80	30/30	1	805	8	154	850	11,6
0432	210	420	DN 100	20/30	3	670	530	219,1	580	43
0576	315	630	DN 100	30/30	3	925	780	219,1	850	44
0768	420	840	DN 150	30/30	4	950	780	273	850	70
1152	630	1260	DN 150	30/30	6	950	780	323,9	850	80
1536	840	1680	DN 200	30/30	8	960	780	406,4	850	135
1920	1050	2010	DN 200	30/30	10	960	780	406,4	850	135

Technical Alternations reserved.